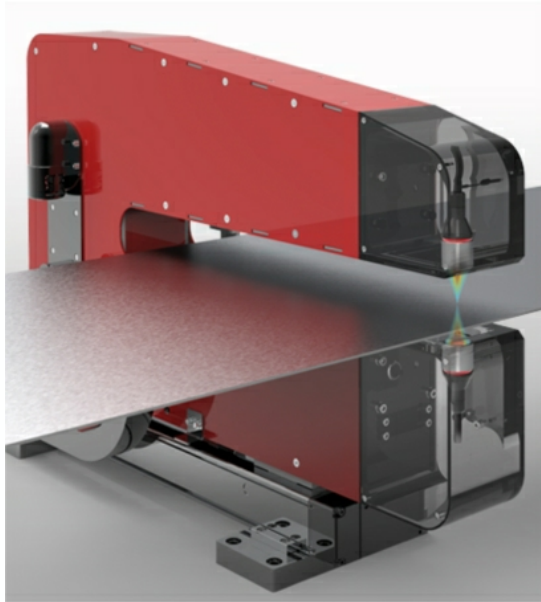




INVITATION to the 14. Blechexpo 2019 in Stuttgart, Germany, November 05. - 08. 2019, in hall 8, booth 8213



Visit us from November 05.- 08. 2019 at the 14. Blechexpo 2019, the International trade fair for sheet metal working!

No matter if **Double Sheet Control**, **Non-Destructive Material Testing**, the **Detection of Weld Seam** or the Weld Seam Quality - we are happy to present the fruits of our developments and innovations in the field of quality control in the mentioned fields. But above all, get informed about new innovative solutions for thickness measurement in order to face the demands of the future.

Especially in the age of "Industry 4.0", the acquisition of material-specific, as well as geometric data with very high accuracies and statements is becoming increasingly important. That's why we want to introduce our latest innovation, the high-performance thickness measuring system **LTM-ULTRA** with confocal technology from **ROLAND ELECTRONIC**.

Visit us from November 5. - 8. 2019 at our booth during the 14. Blechexpo 2019 in Stuttgart, Germany. Inform yourself at the fair about exciting trends and latest developments in the field of metal and sheet metal processing. At our **booth no. 8213 in**

hall 8 you will receive answers to your questions concerning quality control during metal and sheet metal processing.

Maybe together we will be able to handle your daily challenges. Our local experts will gladly advise you. Shall we meet at the fair? Please note:

November 05. - 08. 2019, Stuttgart, Germany: 14. Blechexpo 2019, hall 8, booth 8213 - Roland Electronic GmbH



Weld Seam Detection
SND40 - for tubes, profiles, coils and flat materials as well as for cables and wires

Double Sheet Control, Non-Destructive Material Testing and special applications, e.g. Batteries and Pharma Blister

Non-Contacting LTM Thickness Measurement for profiles, coils and flat materials

ABOUT US

We develop, produce and distribute highly specialized systems for factory automation and quality control since 1965. Our sensor and controllers solve tasks that are not solvable with standard solutions. We provide our customers with the certainty that they can count on our expertise and presence in the future.

TECHNOLOGIES

Our core competencies are: Magnetic Flux, Eddy Current and Induction. With these technologies we build sensors for very special detection tasks.

We apply latest laser technology where the advantages of optical technology are required.

Roland Electronic GmbH - Otto - Maurer Straße 17 - 75210 Keltern - Germany
www.roland-electronic.com - info@roland-electronic.com

We have sent this message to customers and prospective customers of ROLAND ELECTRONIC GmbH.
If you want more information about our privacy policy, please follow this [link](#).

If you no longer wish to receive our newsletter simply mail us or follow this [link](#).

© 2019 Roland Electronic GmbH. All rights reserved.